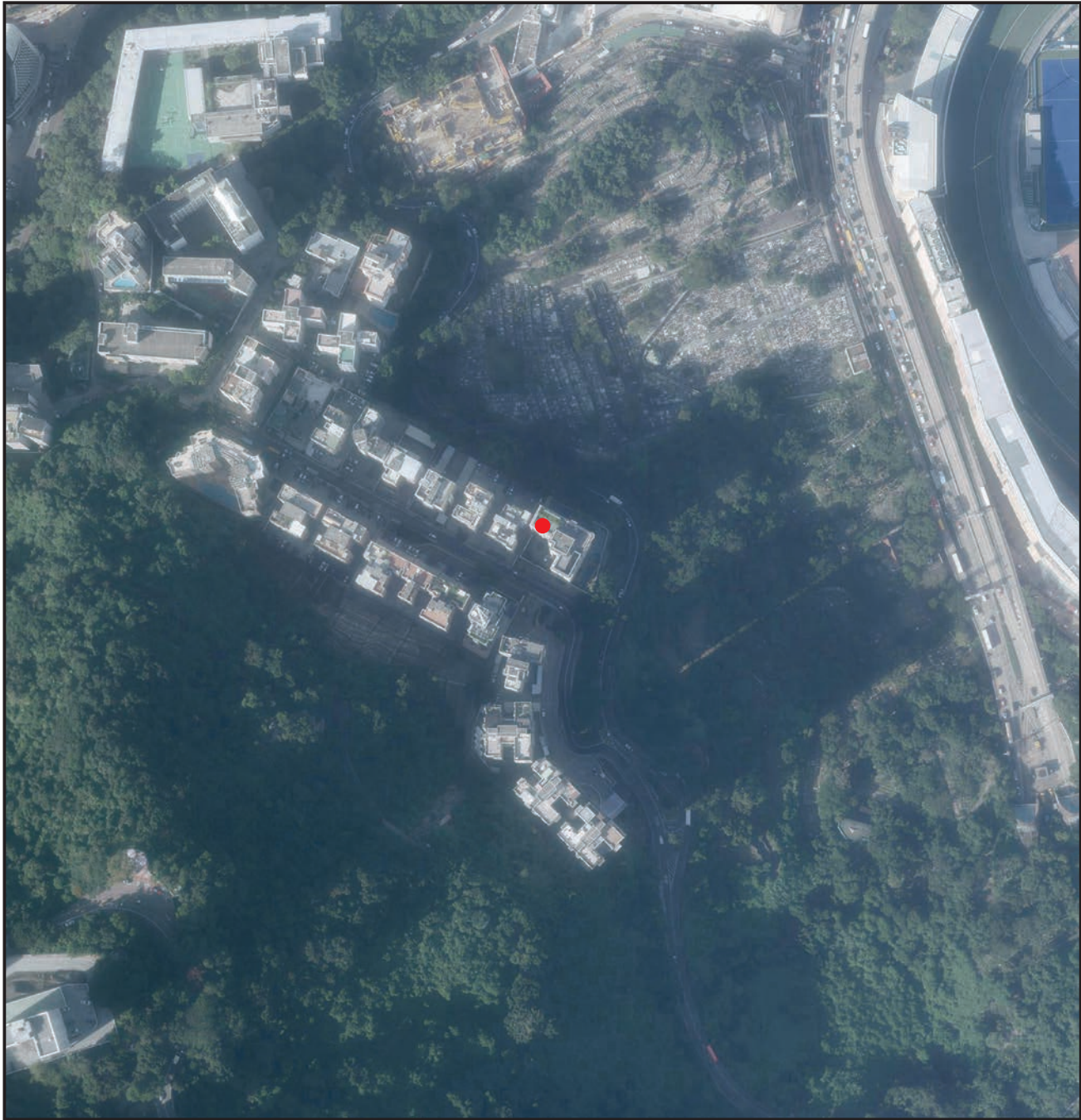


發展項目的鳥瞰照片

AERIAL PHOTOGRAPH OF THE DEVELOPMENT



● 發展項目的位置 Location of the Development

The Aerial Photograph is adopted from part of aerial photograph taken by the Survey and Mapping Office of Lands Department at a flying height of 6,900 feet, photo reference number E103802C dated 27/10/2020.
鳥瞰照片摘錄自於地政總署於2020年10月27日在6,900呎飛行高度拍攝之鳥瞰照片，編號為E103802C。

Survey and Mapping Office, Lands Department, The Government of HKSAR© Copyright reserved – reproduction by permission only
香港特別行政區政府地政總署測繪處版權所有，未經許可，不得複製。

Explanatory remark:
The Aerial Photograph may show more than the area required under the Residential Properties (First-hand Sales) Ordinance (Cap.621) due to technical reason that the boundary of the Development is irregular.
備註：
由於發展項目的邊界不規則的技術原因，鳥瞰照片可能顯示多於《一手住宅物業銷售條例》（第621章）所要求顯示的範圍。

發展項目的鳥瞰照片 AERIAL PHOTOGRAPH OF THE DEVELOPMENT

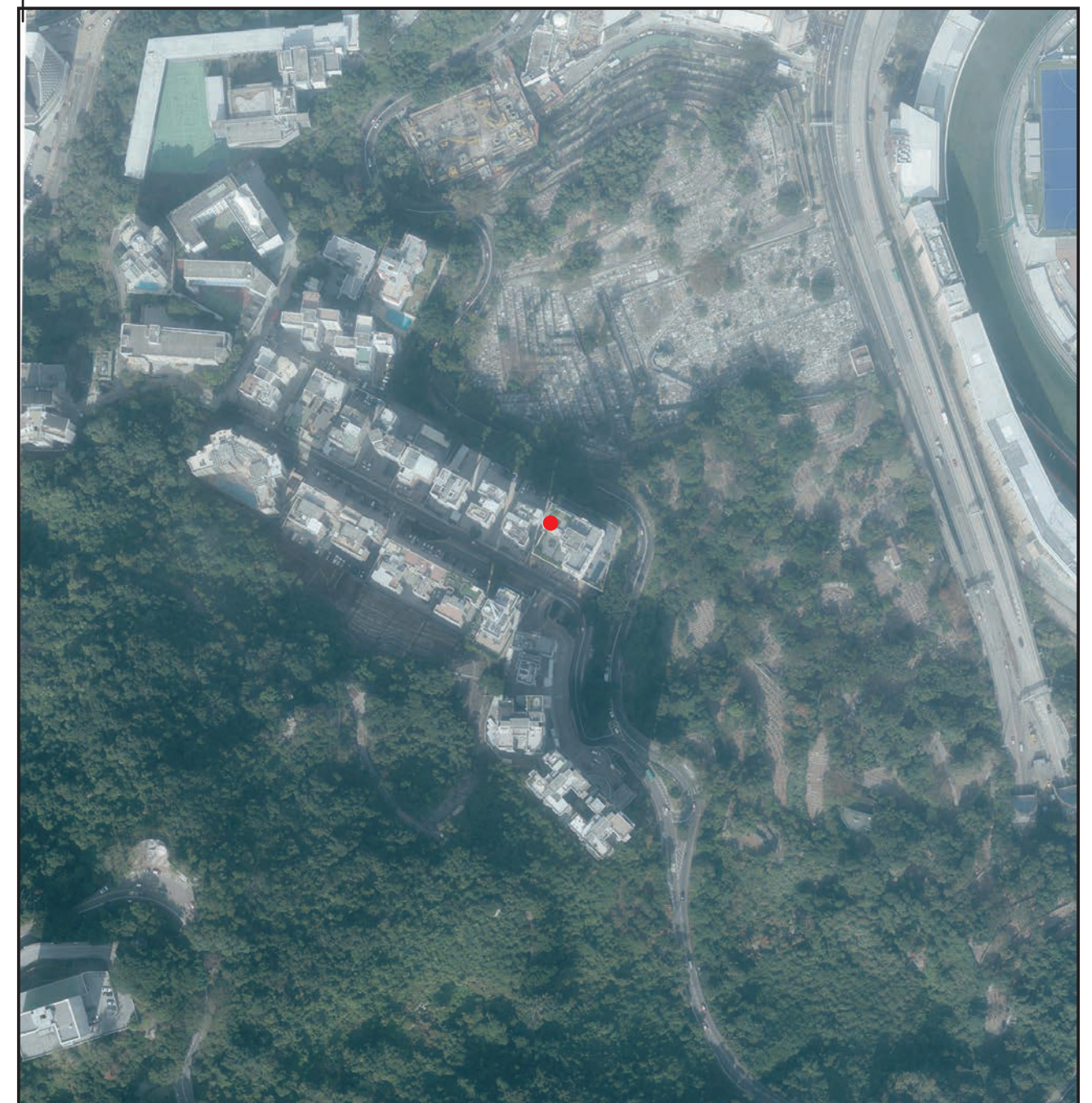


● 發展項目的位置 Location of the Development

The Aerial Photograph is adopted from part of aerial photograph taken by the Survey and Mapping Office of Lands Department at a flying height of 6,900 feet, photo reference number E119084C dated 06/01/2021.
鳥瞰照片摘錄自於地政總署於2021年1月6日在6,900呎飛行高度拍攝之鳥瞰照片，編號為E119084C。

Survey and Mapping Office, Lands Department, The Government of HKSAR© Copyright reserved – reproduction by permission only
香港特別行政區政府地政總署測繪處版權所有，未經許可，不得複製。

This blank area falls outside the coverage of the aerial photograph
鳥瞰照片並不覆蓋本空白範圍



● 發展項目的位置 Location of the Development

The Aerial Photograph is adopted from part of aerial photograph taken by the Survey and Mapping Office of Lands Department at a flying height of 6,900 feet, photo reference number E119085C dated 06/01/2021.
鳥瞰照片摘錄自於地政總署於2021年1月6日在6,900呎飛行高度拍攝之鳥瞰照片，編號為E119085C。

Explanatory remark:-

The Aerial Photograph may show more than the area required under the Residential Properties (First-hand Sales) Ordinance (Cap.621) due to technical reason that the boundary of the Development is irregular.

備註：

由於發展項目的邊界不規則的技術原因，鳥瞰照片可能顯示多於《一手住宅物業銷售條例》(第621章)所要求顯示的範圍。